

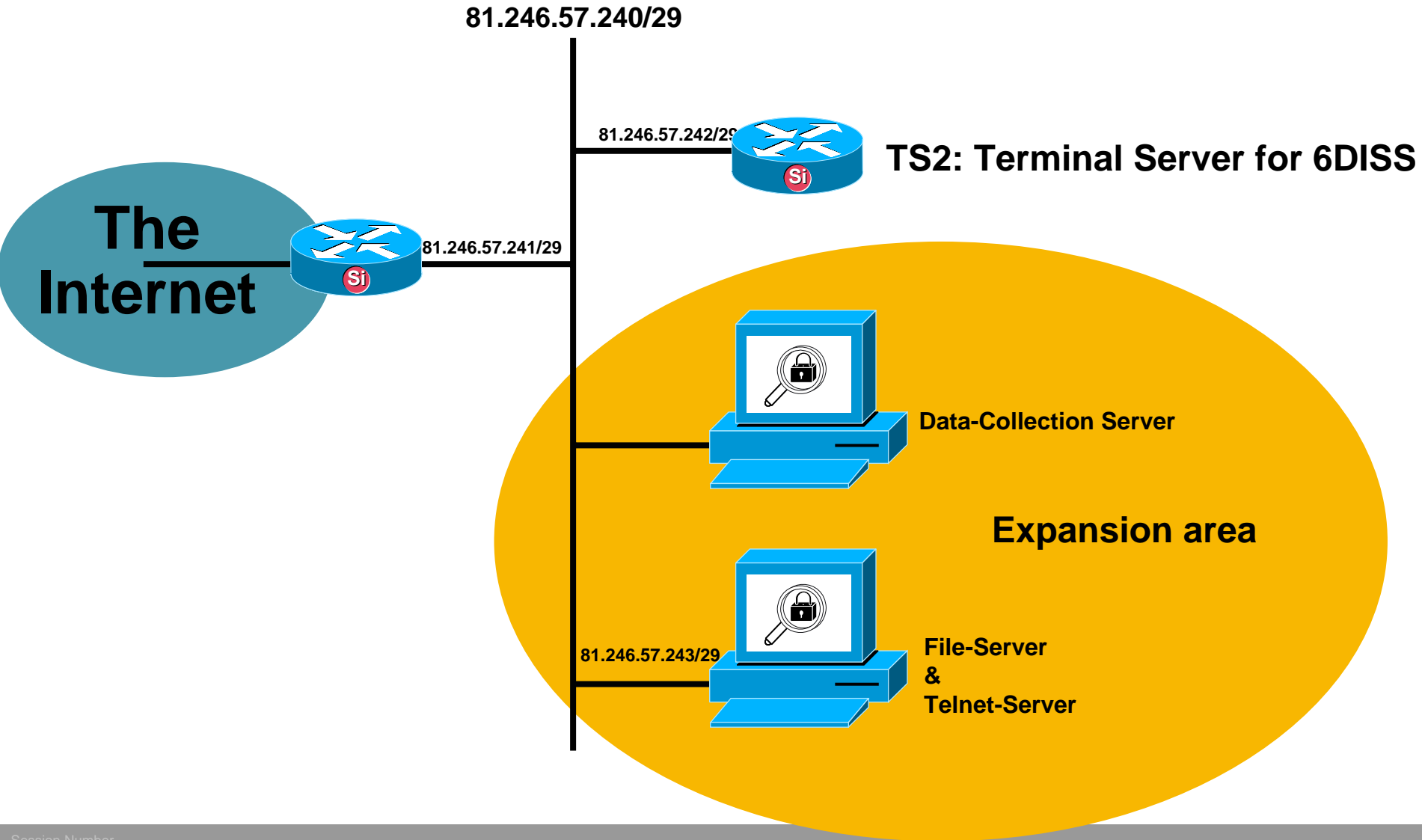


6DISS – Lab Overview

Gunter Van de Velde

17 October 2006

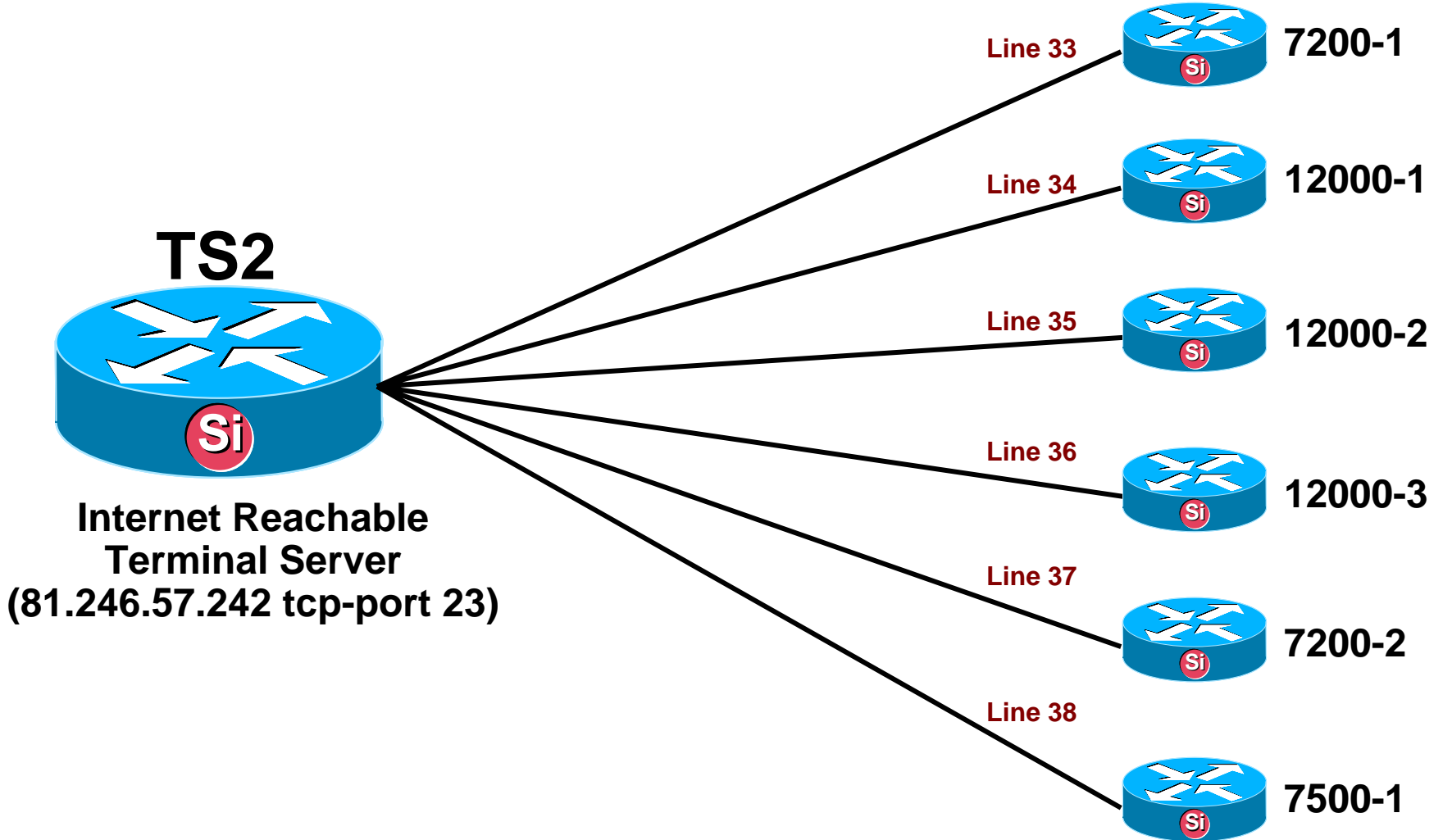
Network Topology 5 January 2006



Access Link Characteristics

- **sDSL**
- **Link-Provider: Belgacom**
- **1 Meg Upstream**
- **1 Meg Downstream**
- **Access-Router: Cisco 800 Series**

6DISS Internet Console Access (1)



6DISS Internet Console Access (2)

- **Internet Console Access**

7200-1 81.246.57.242 tcp-port 2033

12000-1 81.246.57.242 tcp-port 2034

12000-2 81.246.57.242 tcp-port 2035

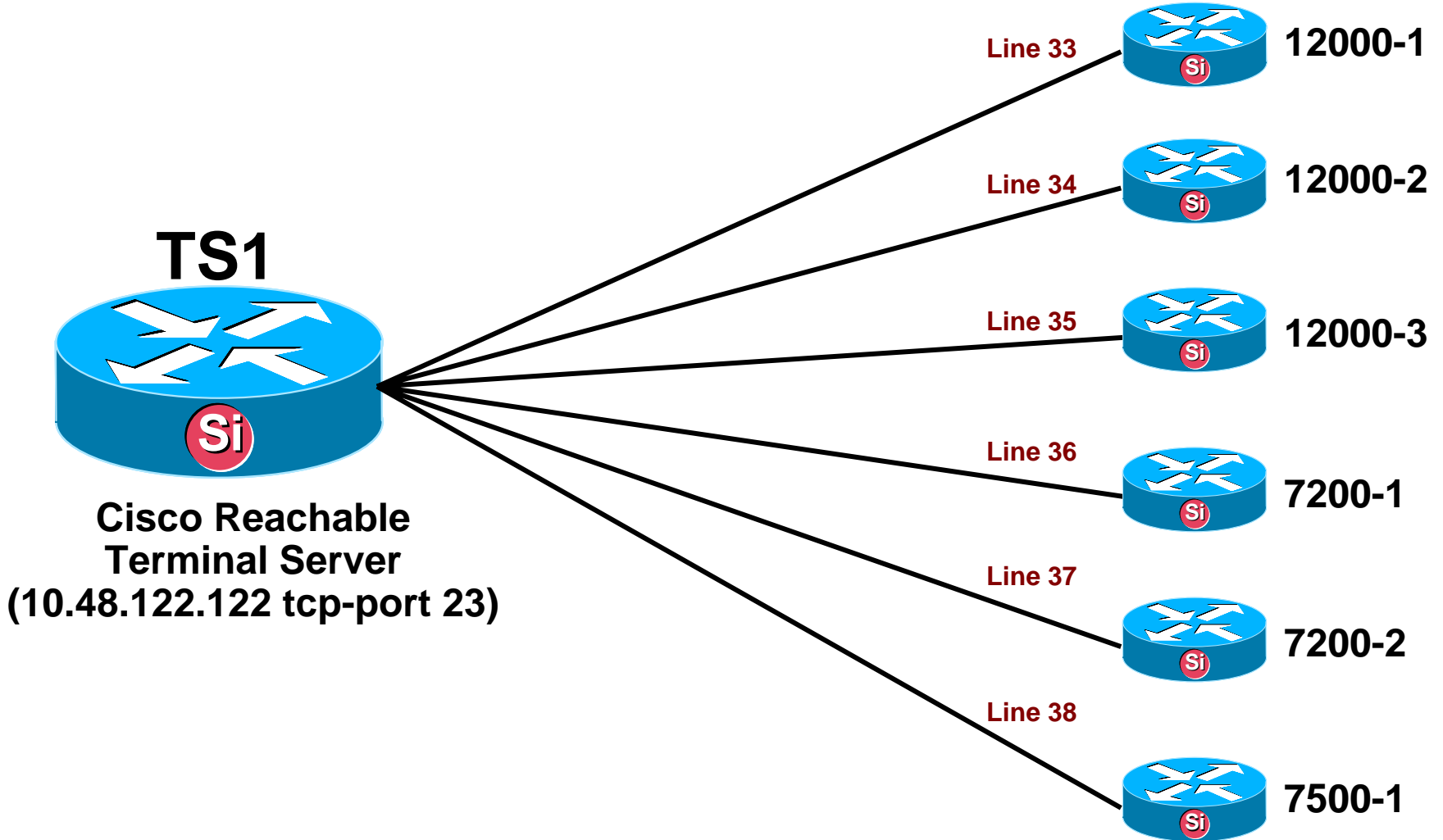
12000-3 81.246.57.242 tcp-port 2036

7200-2 81.246.57.242 tcp-port 2037

7500-1 81.246.57.242 tcp-port 2038

- **For security reasons the Internet Console Access is connected to the 6DISS router AUX ports**

6DISS Internal Console Access (1)



6DISS Internal Console Access (2)

- **Internet Console Access**

12000-1 10.48.122.122 tcp-port 2033

12000-2 10.48.122.122 tcp-port 2034

12000-3 10.48.122.122 tcp-port 2035

7200-1 10.48.122.122 tcp-port 2036

7200-2 10.48.122.122 tcp-port 2037

7500-1 10.48.122.122 tcp-port 2038

TS2 10.48.122.122 tcp-port 2040

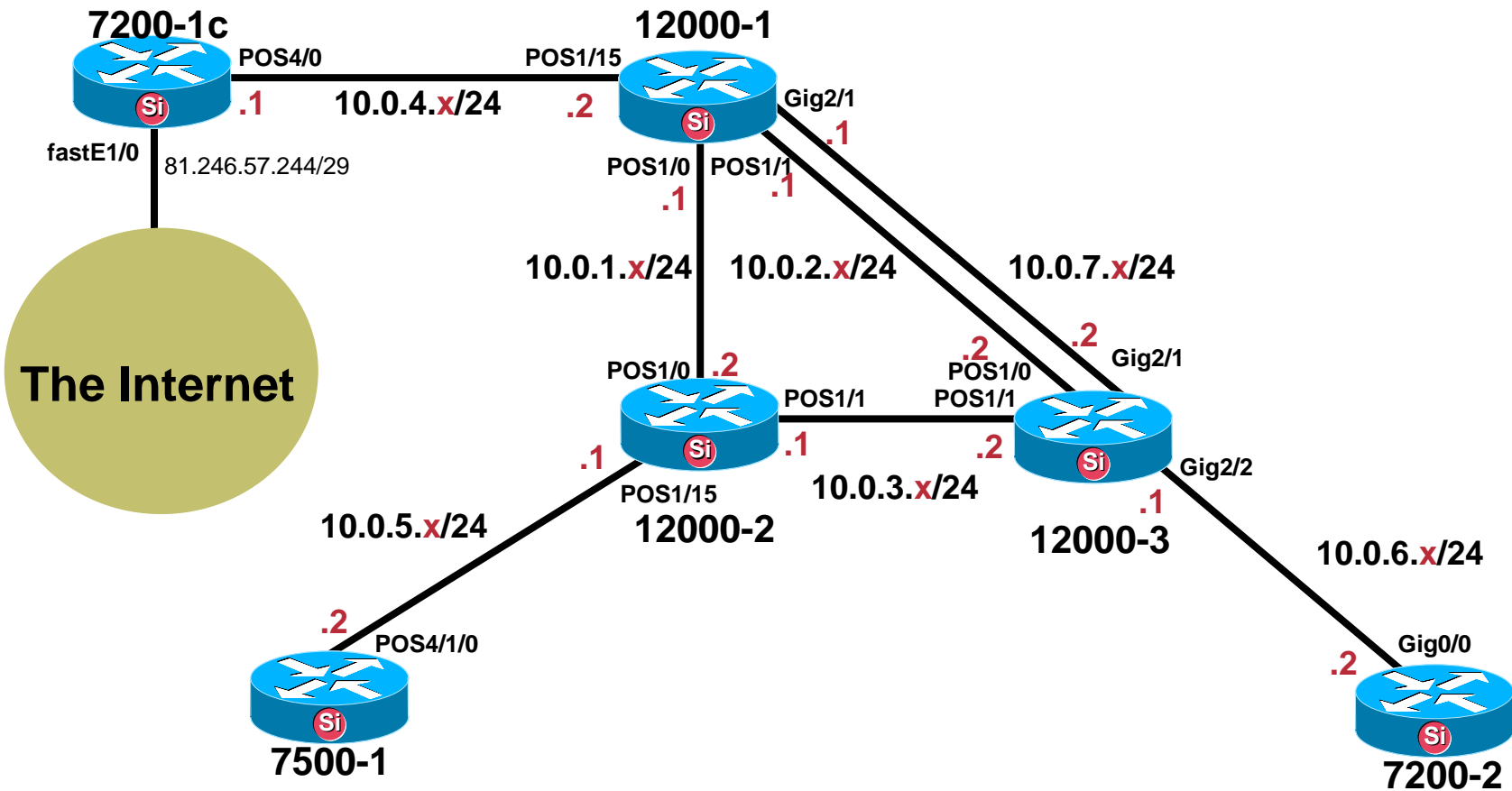
- **For security reasons the Cisco Console Access is connected to the 6DISS router CONSOLE ports**

6DISS Loopback addresses

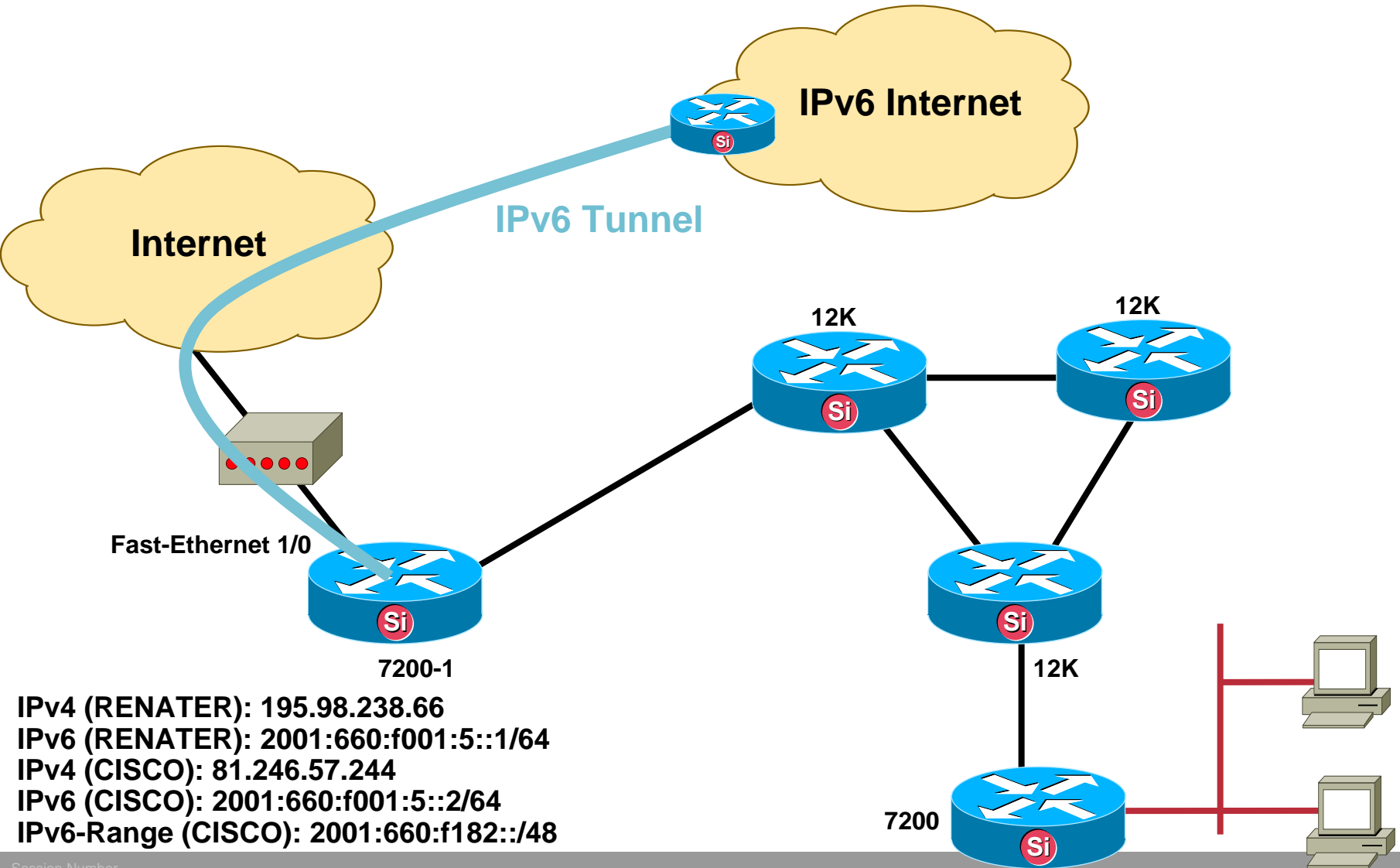
- **Passwords: 6diss**
- **Loopback addresses:**

12000-1	10.1.1.1
12000-2	10.1.1.2
12000-3	10.1.1.3
7200-1	10.1.1.4
7200-2	10.1.1.5
7500-1	10.1.1.6

6DISS LAB Topology



Brussels Lab



6DISS LAB Routing Table

- No IPv6 Configured by default
- IPv6 needs to be configured per lab session

12000-1#sh ip route

Codes: C - connected, S - static, I - IGRP, R - RIP, M - mobile, B - BGP
D - EIGRP, EX - EIGRP external, O - OSPF, IA - OSPF inter area
N1 - OSPF NSSA external type 1, N2 - OSPF NSSA external type 2, E - EGP
E1 - OSPF external type 1, E2 - OSPF external type 2, E - EGP
i - IS-IS, su - IS-IS summary, L1 - IS-IS level-1, L2 - IS-IS level-2
ia - IS-IS inter area, * - candidate default, U - per-user static route
o - ODR

Gateway of last resort is not set

```
10.0.0/8 is variably subnetted, 17 subnets, 2 masks
i L1 10.1.1.2/32 [115/20] via 10.0.1.2, POS1/0
C 10.0.2.0/24 is directly connected, POS1/1
i L1 10.1.1.3/32 [115/10] via 10.0.7.2, GigabitEthernet2/1
    [115/10] via 10.0.2.2, POS1/1
i L1 10.0.3.0/24 [115/20] via 10.0.7.2, GigabitEthernet2/1
    [115/20] via 10.0.1.2, POS1/0
    [115/20] via 10.0.2.2, POS1/1
C 10.0.1.2/32 is directly connected, POS1/0
C 10.0.2.2/32 is directly connected, POS1/1
C 10.1.1.1/32 is directly connected, Loopback0
C 10.0.1.0/24 is directly connected, POS1/0
i L1 10.1.1.6/32 [115/30] via 10.0.1.2, POS1/0
i L1 10.0.6.0/24 [115/20] via 10.0.7.2, GigabitEthernet2/1
    [115/20] via 10.0.2.2, POS1/1
C 10.0.7.0/24 is directly connected, GigabitEthernet2/1
i L1 10.1.1.4/32 [115/20] via 10.0.4.1, POS1/15
i L2 10.0.5.1/32 [115/30] via 10.0.1.2, POS1/0
C 10.0.4.0/24 is directly connected, POS1/15
i L1 10.1.1.5/32 [115/30] via 10.0.7.2, GigabitEthernet2/1
    [115/30] via 10.0.2.2, POS1/1
i L1 10.0.5.0/24 [115/20] via 10.0.1.2, POS1/0
C 10.0.4.1/32 is directly connected, POS1/15
12000-1#
```